

2 SONATE

1. Sonata in D Major GT 4.D02

Adattamento di
Simone VALENTE

Giuseppe TARTINI
(1692–1770)

Allegro

f

4

3 3

6

9

12

mf

16

tr

1.

f

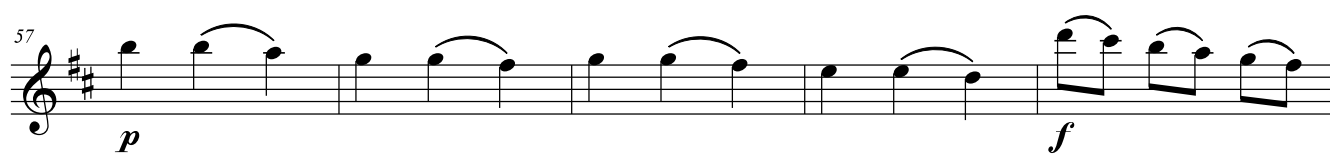
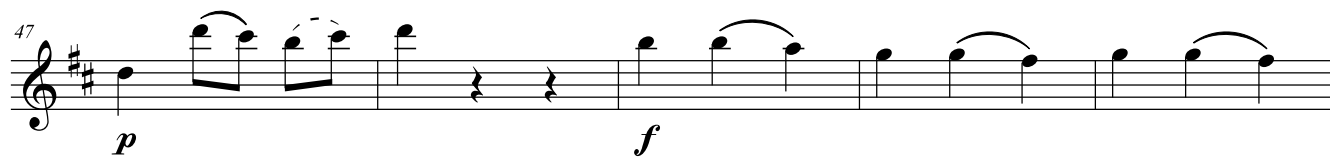
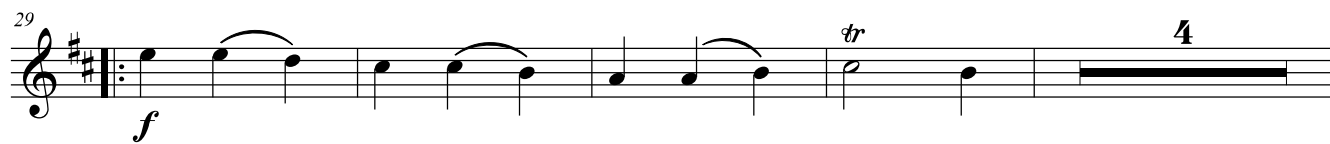
19

2.

f

22

3 3



2. Sonata in C Major GT 4.C03

Adattamento di
Cesare POZZO

Giuseppe TARTINI
(1692–1770)

Largo

p

3

tr

6

mf *dim.* *pp*

9

cresc. *f*

11

p

14

mf *pp* *cresc.*

17

f *p* *mf*

20

tr *pp* *cresc.* *f* *tr*

Allegro

f

4

p

7

9

cresc.

11

mf *dim.*

13

p

17

20

f

23

p *mf* *tr*

Detailed description: The musical score is written for a single melodic line in treble clef, 2/4 time. It begins with a forte (*f*) dynamic. The first staff contains measures 1-3. The second staff (measures 4-5) starts with a piano (*p*) dynamic. The third staff (measures 6-7) continues the melody. The fourth staff (measures 8-9) is marked with a crescendo (*cresc.*). The fifth staff (measures 10-11) features a mezzo-forte (*mf*) dynamic followed by a decrescendo (*dim.*). The sixth staff (measures 12-13) begins with a piano (*p*) dynamic. The seventh staff (measures 14-15) continues the melodic line. The eighth staff (measures 16-17) contains a long, sustained note. The ninth staff (measures 18-19) returns to a forte (*f*) dynamic. The final staff (measures 20-23) starts with a piano (*p*) dynamic, moves to mezzo-forte (*mf*) in measure 22, and ends with a trill (*tr*) in measure 23.

26 *p*

29 *mf*

32 *p*

35

38 *pp* *mf*

41 *pp* *mf*

44 *p*

47 *f* *tr*

50 *tr*

Detailed description: This musical score consists of nine staves of music in treble clef. The notation includes various note values (quarter, eighth, and sixteenth notes), rests, and dynamic markings. Slurs are used to group notes across measures. Measure 26 begins with a piano (*p*) dynamic. Measure 29 features a mezzo-forte (*mf*) dynamic with a crescendo hairpin. Measure 32 returns to piano (*p*). Measure 38 shows a piano-piano (*pp*) dynamic followed by a mezzo-forte (*mf*) dynamic. Measure 41 starts with piano-piano (*pp*) and moves to mezzo-forte (*mf*). Measure 44 is marked piano (*p*). Measure 47 is marked forte (*f*) and includes a trill (*tr*) over a quarter note. Measure 50 also includes a trill (*tr*) over a quarter note. The piece concludes with a double bar line and repeat dots at the end of measure 50.